

Wi-Systems WL40

The WL40 is a high performance, long range, point to point and multi-point outdoor wireless bridging system from IndiComm Global - a leading technical communications solution provider.

Eliminating the cost, delays and disruption of laying fibre or leasing lines, the WL40 offers a flexible, cost effective, high-performance, feature-rich outdoor bridging solution. WL40 can be used in both point-to-point (PtP) and point-to-multipoint (PtMP) configurations, in either transmit or receive mode.

The advanced OFDM radio and propriety technologies used within the WL40 enable data transmission ranges of up to 40Km and data rates of up to 108 Mbps. The WL40 is available in stand alone or integrated versions for maximum flexibility.

The WL40 is ideally suited for Fixed Wireless Access (FWA) PtP and PtMP applications, such as:

- Community and Residential Wireless Broadband Access
- Wireless Internet Access
- Wireless Backhaul
- Hotspots (Fixed & Mobile)
- Telco and ISPs VoIP and Data Networks
- Last Mile Access
- Enterprise Network Expansion
 - Building to building
 - Campus Networks
- Wireless CCTV Video transmission
- Train to Track - VoIP, Video and Data transmission
- Ship to Shore - VoIP, Video and Data transmission
- Covert and Overt Security Surveillance Systems
- MAN (Metropolitan Area Networking)
- WAN (Wide Area Networking)

WL40 is a robust, reliable alternative to wired networks and is available in two forms: Stand alone or integrated antenna unit.

Stand Alone

Available in two frequencies:

2.4 GHz radio - N- Type (F) antenna ports- single or dual port

5 GHz radio - N- Type (F) antenna port- single or dual port

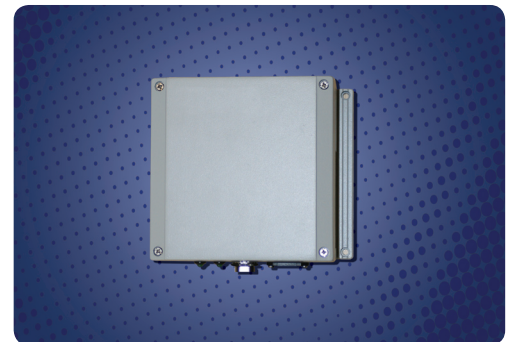
Integrated

2.4 GHz radio with Integrated 19 dBi antenna

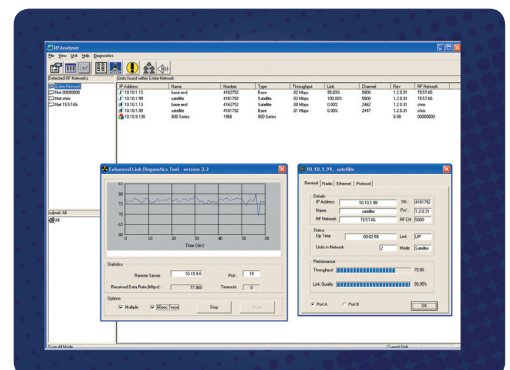
5 GHz radio with integrated 23 dBi antenna



Stand Alone Unit For use with separate antenna



Integrated Unit - All in one package featuring integrated antenna



RF Analyser - a unique configuration and monitoring tool is included for fast and accurate deployment

SPECIFICATIONS	2.4GHz Stand Alone / Integrated	5GHz Stand Alone / Integrated	
RADIO			
Operating Frequency	2.4 - 2.4835GHz	5.150-5.350GHz, 5.470-5.725GHz, 5.150-5.850 GHz (country dependant)	
Modulation	802.11b: CCK, 802.11g: OFDM	802.11a, OFDM	
Maximum RF Output Power	100mW EIRP	4W EIRP	
Data Rate	Up to 54 Mbps	Up to 54 Mbps or 108 Mbps (Turbo Mode)	
Frequency & Power Control		DFS, TPC	
Management Tools	Remote via ethernet using RFAlyser	Remote via ethernet using RFAlyser	
QUALITY OF SERVICE			
IEEE	801.1P	801.1P	
VLAN	802.1Q	802.1Q	
INTERFACE			
Ethernet Interface	10/100 BaseT Auto Sensing, All ports screened	10/100 BaseT Auto Sensing, All ports screened	
Antenna Port	1 or 2 x N Type (F)	1 or 2 x N Type (F)	
SECURITY			
Security	WEP 64/128/152, WEP 2, WPA, 128 Bit AES with TKIP, Access Control, SSID Suppress, MAC Address Filtering IEEE 802.1 x / EAP, 802.1x Radius Client Support	WEP 64/128/152, WEP 2, WPA, 128 Bit AES with TKIP, Access Control, SSID Suppress, MAC Address Filtering IEEE 802.1 x / EAP, 802.1x Radius Client Support	
Authentication	802.1x with Radius Authentication	802.1x with Radius Authentication	
POWER SUPPLY			
Input to PoE Injector	110VAC - 240VAC, 47Hz - 63Hz	110VAC - 240VAC, 47Hz - 63Hz	
Output from PoE Injector	48V (802.3af compliant)	48V (802.3af compliant)	
Power Consumption	9W at 48VDC	9W at 48VDC	
PHYSICAL			
Dimensions (HxWxD)	Stand Alone: 138 x 165 x 74mm Integrated: 310 x 310 x 80mm	Stand Alone: 138 x 165 x 74mm Integrated: 310 x 310 x 80mm	
Weight	Stand Alone: 1.6Kg Integrated: 0.98Kg	Stand Alone: 1.6Kg Integrated: 0.98Kg	
Mounting	Stand Alone: Wall mount Integrated: Wall and pole mount	Stand Alone: Wall mount Integrated: Wall and pole mount	
ENVIRONMENTAL			
Weatherproof	IP67	IP67	
Operating Temperature	-20°C to +50°C	-20°C to +50°C	
Humidity	95% Relative Humidity (Non Condensing)	95% Relative Humidity (Non Condensing)	
APPROVALS			
Approvals	ETS 301-893, ETS 300-328, EMC 301-489/17 FCC Part 15/18, Canada IC2324 A, B, C, F EN60950	ETS 301-893, ETS 300-328, EMC 301-489/17, FCC Part 15/18 Canada IC 2324A, B, C, F EN60950	
CONFIGURATION		ORDER CODE	
2.4GHz / 5GHz Stand Alone single port	WL-201	2.4GHz / 5GHz Stand Alone dual port	WL-101
2.4GHz Radio with Integral 18.5dBi Antenna	WL-701	5GHz Radio with Integral 23dBi Antenna	WL-601

Data transmission speeds may vary depending upon distance and data type.

Antennas and Accessories. All Wi-Comm radios are supplied as standard with an internal PoE power injector, 20m external grade Cat5e cable with weather proof plug, wall and pole mounting brackets, country specific power cord, documentation and software CD-ROM. For more information on antennas and further cable options, please view separate datasheet or visit www.indicomm.co.uk

IndiComm Global Limited
 25a Nottingham Road, Louth, Lincolnshire, LN11 0WB, UK
 T +44 (0) 1507 600748, F +44 (0) 870 2203150, E info@indicomm.co.uk
www.indicomm.co.uk

When used in the UK, privately operated radio equipment in Band C must take into consideration the location of the primary users and be licensed with OFCOM. Details of licensing and the locations of 5GHz equipment can be found at: <http://www.ofcom.org.uk/radiocomms/ifi/licensing/classes/rfms/information>

Copyright © IndiComm. All rights reserved. All other company and product names maybe trademarks of their respective companies. While every effort is made to make sure the information shown is accurate, IndiComm does not accept any liability for any errors or mistakes that may arise. Specifications and other information may be subject to change without notice. All performance figures and other data contained in this document may vary by application.

